



# SWE Newsletter



Volume 4, Issue 2

December 2004

## Calendar of Events

- Nov. 17~  
Alumni Dinner
- Dec. 1~Study Break  
(Yoga)
- Dec. 3~  
Volunteering at  
Elijah's Promise
- Dec. 13-14~  
Reading Days
- Dec. 15-23~  
Exams
- Dec. 24-Jan. 17~  
Winter Break!

SWE Meetings are the 1st and 3rd Wednesdays of each month in BCC graduate student lounge at 7:30pm

## Inside this issue:

Semester Highlights	1
Productive Procrastination	1
Getting to know the SWE E-Board	2
Study Skills: Do You Have Time to Read This?	3
Contact Information	4

## Semester Highlights

**NATIONAL CONFERENCE-** On October 13-16th, three Rutgers SWE members attended the National Conference in Milwaukee, Wisconsin. Aside from attending informative workshops developing professional and personal skills, meeting other engineers from various schools, and networking with professional members, there was a career fair with over 175 companies present. The conference was a great place for students to get their resume out to many diverse companies within engineering. Next year we would like to see you in attendance!

*Ashley Alexandro '05*

**ALUMNI DINNER-** On Wednesday, November 17, 2004 Rutgers SWE hosted its 1<sup>st</sup> annual Alumni Dinner and it was a huge success! Past SWE members, as well as members of New Jersey SWE, were contacted and invited to attend a dinner in their honor and to celebrate SWE. Evite, an online invitation system, was used to invite our members and alumni. For those alumni that could not attend, they were given the opportunity to write a response so that everyone could see what they are currently involved in and why they couldn't be at the event. We had a lot of great responses from women currently living in Maryland, Colorado, and even California. Some responses even came from women that graduated in the late 60's and early 70's. The hope of this event is to build a stronger relationship between current and past SWE members. This relationship will help us to learn more about industry professionals and create a new networking circle for SWE members. The Alumni Dinner was a lot of fun and very filling! Everyone had a great time learning about other people and finding out more about SWE. We hope to see you at our 2<sup>nd</sup> Annual Alumni Dinner next year!

*Mary Hiras '05*

## Productive Procrastination

*If you want to take a breather from all your final exam studying (or cramming), but still feel like you are doing something productive with your time, check out some of these sites to remind yourself why you are doing engineering!*



### **www.engineergirl.org**

Website hosted by the National Academy of Engineering. You can take quizzes, build rollercoasters, learn about the profession, and more. It's geared towards pre-college girls, but it's at the right level for tired college students.

### **www.wired.com**

This is the website for Wired magazine, but it's not just reading up on the latest technology. You can surf the web, read current events, check stocks, and even find your nearest Wi-Fi hot spot!

### **www.thinkgeek.com**

Buy all the geek apparel you want, or with such categories as "Gaming," "Hacker" and "Generic Geek" you can find clothing for all your engineering friends for the holidays. Other highlights include the Geekman action figure and the entire category of caffeine products.

*Submitted by Vincent Lee-Electrical Engineering*

### **www.HowStuffWorks.com**

Read articles on how stuff works. Besides learning about how turbine engines, and cell phones work, you can also find out about hangovers and Christmas trees.

*Submitted by Dan Wong-Mechanical Engineering*

By the way, we don't advocate procrastination; look on page 3 to evaluate your time management.



## Getting to know the SWE E-Board!

### NICOLE SETZER

*Web Chair*

*Sophomore*

*Industrial & Systems Engineering*

Best Class: Analytical Physics II

Summer '04: Camp counselor, nutrition

aide, Economics summer class

Best part of SWE: Super SWE T-shirts!

They are so cool it's unbelievable!

Advice for freshman: Time management is a good thing to learn.

Future Plans: Work with healthcare facilities

### ADITI PALIWAL

*External Vice President*

*Junior*

*Industrial Engineering*

Summer '04: Vacationing in Spain

Advice for Freshman: Play hard, but work harder

### AMY TSUI

*Newsletter Chair*

*Freshman*

*Chemical Engineering*

Best Class: Physics

Best Professor: Dean Rankin

Summer '04: Traveled around Turkey with a friend.

Best part of SWE?: It helps you feel part of the engineering community and I'm learning a lot of new things and gaining a lot of new experiences.

### REGINA VOGEL

*Treasurer*

*Senior*

*Packaging Engineering*

Best Class: Thermodynamics of Packaging

Best part of SWE: The friendships you make. When I first transferred here, I didn't know anyone! I went to one of the SWE meetings and from that day on I was hooked! Everyone is so great and they're always there for you.

Advice for Freshman: Definitely get involved in extracurricular activities. They help you make great friends and contacts for the engineering industry.

Future Plans: I plan to work within the fields of consumer products, cosmetics, and pharmaceuticals. I'd like to experience design and testing in all of these fields of to become a more well-rounded and experienced packaging engineer.

### CARA LEE

*Community Service Chair*

*Senior*

*Industrial & Systems Engineering*

Best Class: Theatre Appreciation

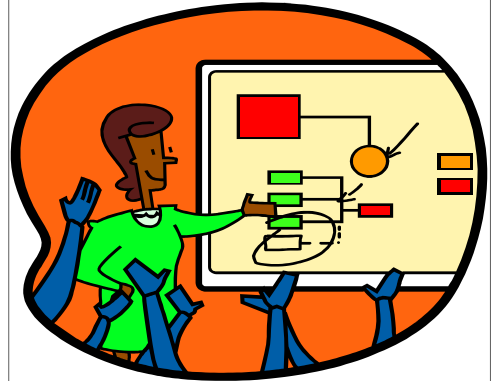
Best Professor: Marshall Jones (Theatre App.)

Summer '04: Tiffany & Co. internship

Why join SWE?: Informative workshops, cool members, and great opportunity to make contacts and network!

Advice for freshman: Get a summer internship, and apply for School of Engineering scholarships in the spring

Future Plans: Work out in the "real world" and get an MBA eventually



### ASHLEY ALEXANDRO

*Internal Vice President*

*Senior*

*Chemical Engineering*

Best Class: Transport

Best Professor: Warmingham

Summer '04: Worked in L'Oreal USA in their Maybelline manufacturing plant in Little Rock, Arkansas.

Best Part of SWE: Meeting so many new people you wouldn't necessarily meet in your classes, and learning a lot of things that will help for interviewing, and when you get into the workplace!

Advice for Freshman: Get involved ASAP...the earlier the better.

Future Plans: Currently seeking full time employment.

### NATASHA PATEL

*Secretary*

*Senior*

*Biomedical Engineer*

Best Class: Intro to Biomaterials

Summer '04: Internship at Polymerix, NJ Governor's School of Engineering and Technology Counselor

Why Join SWE?: Useful workshops, Networking opportunities, members from different engineering majors

Advice for Freshman: Get involved in the E-board. Leadership skills and interviewing skills will help you be prepared for the workplace.

Future Plans: Work two years in industry and go back to graduate school.

Other Comments: I regret the fact that I did not come to SWE earlier on.



# Study Skills: Do You Have Time to Read This?



As finals near, studying should be becoming a priority. Maybe you shouldn't pick up that extra shift at work or go to the movies this Saturday. If this sounds a little drastic, you can also consider honing your time management skills and utilizing all you extra time. The graph below will tell you how much time you actually have to study a week. If you take that number and divide it by the number of classes, you can determine how many hours you have to study for a class. Hopefully, this will give you a good idea of how you spend your time.

	# Hours Per Day	Operation	#Days Per Week	#Hours Per Week
On average, how often do you sleep in a 24-hr time period, including afternoon naps?		X	7	=
On average, how many hours do you spend on grooming activities (showering, putting on makeup, etc, shaving, etc)?		X	7	=
On average, how many hours do you spend on meals, including prep time and clean up?		X	7	=
How much time do you spend commuting to class? (include walking, driving, taking the bus, etc) And how many days a week?		X		=
On average, how many hours a day do you spend running errands?		X	7	=
On average, how many hours a week do you spend on co curricular activities (working out, student organizations, going to church, etc)?				
On average, how many hours a week do you spend working at a job?				
How many hours do you spend in class each week?				
On average, how many hours per week do you spend with friends? (going out, watching TV, going to parties, etc)				
Add the numbers of hours you spend a week doing the above activities.				
Subtract this number from 168 (the total number of hours in a week) to find out how many hours are left for studying.				

Table adapted from "Study Skills Self-Help Information: Time Use Inventory". Virginia Tech



SOCIETY OF WOMEN ENGINEERS \*  
RUTGERS UNIVERSITY SECTION

Society of Women Engineers  
Rutgers, The State University of NJ  
Engineering Building B-110, Busch Campus  
98 Brett Road  
Piscataway, NJ 08854



*Gear Up With SWE!*

***We're on the web!***  
***coewww.rutgers.edu/swe***

## *Contact Information*

<i>Position</i>	<i>Name</i>	<i>Email</i>
President	Mary Hiras	mhiras@eden.rutgers.edu
External Vice President	Aditi Paliwal	apaliwal@eden.rutgers.edu
Internal Vice President	Ashley Alexandro	ashleya@eden.rutgers.edu
Secretary	Natasha Patel	natashap@eden.rutgers.edu
Treasurer	Regina Vogel	revogel@eden.rutgers.edu
EGC Representative	Heather Preisendanz	hpreisen@eden.rutgers.edu
Community Service Representative	Cara Lee	caral@eden.rutgers.edu
Web Chair	Nicole Setzer	nikki07@eden.rutgers.edu
Newsletter Chair	Amy Tsui	atsui@eden.rutgers.edu
Public Relations Representative	Heena Patel	heenerzz@yahoo.com
Advisor	Ilene Rosen	ilrosen@rci.rutgers.edu
Advisor	Evelyn Hanna	evelynh@rci.rutgers.edu