

**Society of Women  
Engineers  
\*Rutgers\*  
University Section**

# SWE Newsletter

## A Semester in Review

Volume 5, Issue 1

Fall/Winter 2005

SWELL Participants	1
Career Fair	2
Survey	2
SWELL Program	2
Alumni Dinner	3
Interviel/Resume Writing	3
Contact Information	4

### Congratulations to all the participants of the first semester of SWELL!

#### Leaders

Tamara Brizard  
Shiny Eapen  
Juan Gomez  
Patty Jasion  
DaEun Jung  
Megan Kogit  
Muneem Mainuddin  
Jenna Pacheco

Nicole Setzer  
Rose Shim  
Amy Tsui  
Nancy Twu  
Dana Wexler  
Candiece White  
Brandis Williams  
Megan Wilson

Claire Dimaculangan  
Andrew Erwin  
Ashley Ivey  
Ariell Joiner  
Christine Lomiguen  
Cristina Prado  
Melissa Przyborowski  
Shejal Shah  
Kyra Thompson  
Ashley Williams  
Ariel Yakubov  
Carolyn Youssef



Study Break! SWE members learn Self Defense

#### Best Leaders

Megan Kogit  
Nisha Patel

#### Best Learners

Kyra Thompson  
Shejal Shah

Aditi Paliwal  
Jill Patel  
Nisha Patel  
Heather Preisendanz  
Elizabeth Sarmiento  
Kim Scott

**Learners**  
Diana Arellano  
Cathy Chan  
Alisa Chen  
Vanessa Cruz  
Fremio Derilus

#### Calendar of Events

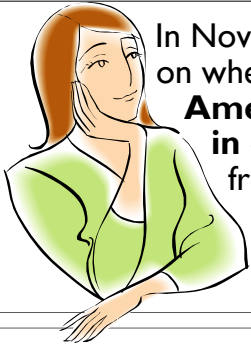
- Jan. 25 ~ Sugar Rush Social
- Feb. 8 ~ Belly Dancing
- Feb. 22 ~ Research Projects
- Mar. 8 ~Dean's Panel
- Mar. 22 ~ Elections
- Apr. 5 ~ Business Workshop
- Apr. 19 ~Senior Design Projects

SWE Meetings are the 1st and 3rd Wednesdays of each month in BCC Rm 116 at 8pm

## September 16: Engineering and Computer Science Career Fair . . .

SWE was among four student organizations to host the 20th Annual SWE-SHE-MEET-WCS Engineering and Computer Science Career Fair. Preparations were begun in May 2005 contacting companies and graduate schools and on September 16, 2005 over twenty companies were in attendance as well as one graduate school, Duke University. These companies spanned all the engineering disciplines and were of all different sizes and industries. Among them were Johnson and Johnson, Bloomberg, Verizon, and Merck. All the companies gave very positive feedback and were impressed by the engineering students they spoke with. This student run career fair provided attendees to have more one-on-one time with each company recruiter. There were also information sessions held throughout the day to allow for students to better learn about certain companies. To prepare SWE members for the Career Fair, SWE held resume writing and interviewing skills (see pg 3) and "How to work a Career Fair" workshops. As the SWE Career Fair Coordinator, I was very proud of SWE's involvement and the career fair provided our members and our society with new contacts and opportunities. Special thanks to Nancy Twu and Nicole Setzer for volunteering their time and effort in helping to coordinate this large event. ~Amy Tsui

## Women in Engineering Survey

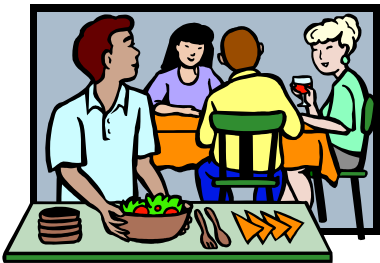


In November, a brochure and survey was e-mailed to SWE members asking their opinions on whether women face bias in engineering. The brochure gave such facts as "**Only 9% of American engineers are women**" and "**Only 21% of Bachelor's Degrees earned in engineering are obtained by women**". While some responses to the survey from SWE claimed that females don't face any bias, a lot of members spoke out about how the gender gap has affected them. Members also rated the effectiveness of SWE from 1 to 5. The average was a 4.1. ~Melissa Przyborowski '09

## SWE Leading and Learning Program

This fall marked the first semester of SWE's mentoring program, S.W.E.L.L. (SWE Leading and Learning Program). Before school began emails were sent out to all the female freshmen engineers and all SWE members explaining the program and those interested signed up to have a mentor or be mentored. Sign up was also done at the Engineering Barbeque/Freshmen Engineering Convocation. These forty "Leaders" and "Learners" were paired up based on major, interests, and proximity, among other factors in order to maximize benefit to the freshmen. The minimum requirement was four contacts with each other (primarily through e-mail) throughout the duration of the semester. In the end, both Leaders and Learners gained a lot from participating in the program. Some things that Leaders advised their Learners of included engineering major and minor decisions, help with classes and scheduling, advice about professors, and other general questions about the engineering program. As a result of the program, participants felt more involved in SWE even when not being able to come to meetings as well as meet new people in the engineering school. Currently, SWELL is only active during the Fall semester, but please contact Amy (atsui@eden.rutgers.edu) if you are interested or have questions. ~Amy Tsui '08

*Nov. 16: Alumni Dinner/SWELL*



One of the ways SWE maintains correspondence with its alumni is with its annual Alumni Dinner, a chance for alums and current SWE members to network and share experiences in engineering. This year, to expand upon the annual tradition, the dinner featured both alums and members of the SWELL program. Six alumni attended the dinner, sharing varied experiences in industry and graduate school. Loraine Huchler, Rutgers SWE's regional advisor, was also present at the dinner to share a few words of wisdom. Finally, after a semester of mentor-mentee correspondence, SWELL members met up at the dinner to be acknowledged for their participation in the program. SWELL, the Society of Women Engineers – Leading and Learning, is a mentoring program that started this fall. Overall, the dinner was a fun experience and a great success. ~Nancy Twu '08

*SWE and Community Service*

This semester the Society of Women Engineers has collaborated with the Engineering sorority, Phi Sigma Rho, and walked in Making Strides, a walk administered by the American Cancer Association against breast cancer. We've participated at the Woodbridge location and hopefully we will be able to continue this ongoing tradition next year. Also, SWE has collected food donations for a Thanksgiving dinner held by Elijah's Promise, a soup kitchen which is located in New Brunswick. We are Planning on continuing to contribute to their facility in the upcoming semester, including a clothes drive to be donated to them as well.

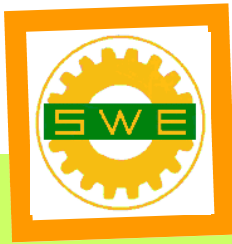
~ Dana Wexler '06



*Nov. 2: Interview/Resume Writing*



The workshop allowed SWE members to gain more insight on how to prepare a top-notch resume and practice for interviews. Guest speakers for this meeting were Tushar Patel from Bristol-Myers Squibb Company and Sandra Vilano from Career Services in Busch Campus Center. Tushar gave us tips on what major companies look for in resumes, while Sandra offered us her first-hand experience on interviewing. Both speakers had valuable advice that will be greatly appreciated as interviews are either on going or imminent. ~Jill Patel



Society of Women Engineers  
 Rutgers, The State University of NJ  
 Engineering Building B-110, Busch  
 Campus  
 98 Brett Road  
 Piscataway, NJ 08854

**SOCIETY OF WOMEN  
 ENGINEERS  
 \*RUTGERS\* UNIVERSITY  
 SECTION**

*Gear Up With SWE!*

*We're on the web!*  
[swe.rutgers.edu](http://swe.rutgers.edu)



## Contact Information

<i>Position</i>	<i>Name</i>	<i>Email</i>
President	Aditi Paliwal	apaliwal@eden.rutgers.edu
External Vice President	Amy Tsui	atsui@eden.rutgers.edu
Internal Vice President	Nicole Setzer	nikki07@eden.rutgers.edu
Secretary	Tamara Brizard	tbrizard@eden.rutgers.edu
Treasurer	Candiece White	cawhite@eden.rutgers.edu
EGC Representatives	Nancy Twu	ntwu@eden.rutgers.edu
Community Service Representative	Dana Wexler	dwexler@eden.rutgers.edu
Web Chair	Christine Lomiguen	lomiguen@eden.rutgers.edu
Newsletter Chair	Melissa Przyborowski	mprzybor@eden.rutgers.edu
Public Relations Representative	Jill Patel	jillpat@eden.rutgers.edu
Advisor	Ilene Rosen	ilrosen@rci.rutgers.edu