

Society of Women
Engineers
Rutgers
University
Section

SWE Newsletter

“Beginning ‘06” Edition

Volume 5, Issue 2

Jan/Feb 2006

Ready, Set, Research!

Research Fair	1
Belly Dancing	2
Sugar Rush Social	2
Engineering Chuckles	2
JP Morgan	3
Research Fair	3
Message from the Chair	3
Contact Information	4



Calendar of Events

- Jan. 25 ~ Sugar Rush Social
- Feb. 1 ~ JP Morgan Chase Presentation
- Feb. 8 ~ Belly Dancing
- Feb. 22 ~ Research Fair
- Mar. 8 ~ Business & Technology Event
- Mar. 22 ~ Elections
- **Apr. 5 ~ Dean's Night**
- **Apr. 19 ~ Massage Night**

SWE Meetings are the 1st and 3rd Wednesdays of each month in BCC Rm 116 at 8pm



*Biomedical
Ceramic
Chemical*



Check out Research Fair news on Page 3!

*Civil
Electrical
Computer
Industrial
Mechanical*

Belly Dancing Workshop ~ February 8



Rutgers SWE was ecstatic to present a belly dancing workshop held by the renowned, talented, and accomplished Nagwa Sai'd. Nagwa's characteristics as statuesque, elegant, and graceful have earned her the title of 'Philadelphia's foremost Middle Eastern dancer'. She has been performing and instructing dance for the past 25 years and has traveled to Egypt to dance and study with many famous Egyptian dance instructors. Nagwa is an instructor, choreographer, costume designer, drummer, and performer with a troupe of her own, El Raks Sai'd (Happy Dancers). As the artistic director of El Raks Sai'd,

she produces and performs in theater shows on a regular basis, routinely featuring dancers from around all over the country. She is known for her historically authentic costumes and for her painstaking research into ancient pharonic choreography. She is also familiar with the traditional dances of Egypt, Morocco, Tunisia, Turkey, and Algeria. In 1983, she was granted the special privilege of dancing for the Egyptian Ambassador to the United States in Baltimore, Maryland. Nagwa has devoted several years to the study of classical Russian ballet, 13 years mastering the arts of Flamenco and other Spanish dances. She has also studied African Cuban dancing. Highly accomplished, Nagwa Sai'd is truly Philadelphia's First Lady of Dance. Nagwa's belly dancing workshop was held for an hour – but it gave all attendees an opportunity to learn a little culture, a little dance and some great new moves! SWE members were rejuvenated by her lasting remarks, "always find time to dance – it is good for the soul and will keep you young!" ~ Aditi Paliwal '06

Sugar Rush Social ~ January 25

SWE's first meeting of the semester turned out to be a great success. Themed the "Sugar Rush Social," batches of cookies, brownies, and cupcakes were baked and left ready to be frosted and sprinkled on by all the attendees. The meeting began with a fun icebreaker. Names of famous people and characters of Hollywood, athletics, politics and academia were taped to everyone's backs. The names ranged from actors like Brad Pitt to characters like Big Bird to famous people with an engineering background like Montel Williams. The goal was for each person to guess his or her person by asking yes or no questions to other people. Combining baked goods with interactive icebreakers and lots of new faces was an equation for a good time had by all!

~Amy Tsui '08

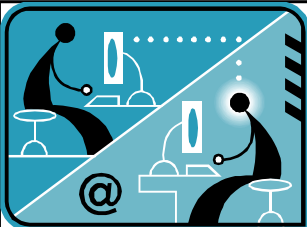


Engineering Chuckles

The Car

There were three engineers in a car; an electrical engineer, a chemical engineer, and a Microsoft engineer. Suddenly, the car stops running and they pull off to the side of the road wondering what could be wrong. The electrical engineer suggests stripping down the electronics of the car and trying to trace where a fault may have occurred. The chemical engineer, not knowing much about cars, suggests maybe the fuel is becoming emulsified and getting blocked somewhere. The Microsoft engineer, not knowing much about anything, came up with a suggestion. "Why don't we close all the windows, get out, get back in, and open all the windows and see if it works?"

JP Morgan Information Session ~ February 1



SWE was contacted by JP Morgan to host an Info session on February 1st, with the opportunity for students to learn more about their internship programs and the dynamics of the company. A panel of five employees of JP Morgan financial were present, two being recent Rutgers graduates. After a short power point presentation on the internship possibilities within the company, the floor was open to questions by students. We had a great turnout with about 40 people, and they were able to network with the employees for the rest of the info-session. As always, SWE tries to bring forth great opportunities for its members, so look out for more events like this in the future! ~ Tamara Brizard '07

Research Fair ~ February 22

On February 22, SWE hosted its first Research Fair, which was a huge success! Faculty and graduate students from seven departments came out to showcase their research, filling the MPR with project displays. Not only were presenters enthusiastic about sharing their research interests, many readily accepted resumes of students, offering undergraduates the opportunity to work in their labs. The Research Fair provided a very intimate setting for students to talk to faculty and for faculty to intermingle and learn about each other's work. Based on the successful turnout from both presenters and students, we hope to improve upon and repeat this event next fall. Hope to see you there!

We'd also like to give a special thank you to our professors and graduate students:

- Biomedical: Dr. Tzanakou, Dr. Cai, Kelly Horn
- Ceramic and Materials: Dr. Lynch, JD Sorge, Cari August
- Chemical: Dr. Pederson
- Civil: Dr. Najm, Dr. Nassif
- Electrical and Computer: Dr. Burdea
- Industrial: Dr. Altiok, Dr. Luxhoj
- Mechanical: Dr. Lu

And to everyone else who made this event possible - Thank you!

~Nancy Twu '08

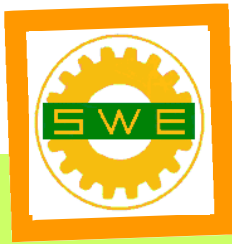
Message from the Chair

My First year in the School of Engineering at Rutgers has presented me with a lot of challenges, experiences, and rewards. Whether it was studying for calculus or figuring out computer programming, I had to adjust to different situations (like doing my physics lab without incurring too much error). Even though the



material was difficult, I was able to meet new people and join SWE! These past months have really secured what I want to do in the future. SWE has helped me network with other students, meet with companies, and overall just have fun.

~ Melissa Przyborowski '09

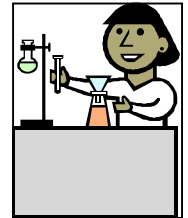


Society of Women Engineers
Rutgers, The State University of NJ
Engineering Building B-110, Busch
Campus
98 Brett Road
Piscataway, NJ 08854

**SOCIETY OF WOMEN
ENGINEERS
RUTGERS UNIVERSITY
SECTION**

Gear Up With SWE!

We're on the web!
swe.rutgers.edu



Contact Information

<i>Position</i>	<i>Name</i>	<i>Email</i>
President	Aditi Paliwal	apaliwal@eden.rutgers.edu
External Vice President	Amy Tsui	atsui@eden.rutgers.edu
Internal Vice President	Nicole Setzer	nikki07@eden.rutgers.edu
Secretary	Tamara Brizard	tbrizard@eden.rutgers.edu
Treasurer	Candiece White	cawhite@eden.rutgers.edu
EGC Representatives	Nancy Twu	ntwu@eden.rutgers.edu
Community Service Representative	Dana Wexler	dwexler@eden.rutgers.edu
Web Chair	Christine Lomiguen	lomiguen@eden.rutgers.edu
Newsletter Chair	Melissa Przyborowski	mprzybor@eden.rutgers.edu
Public Relations Representative	Jill Patel	jillpat@eden.rutgers.edu
Advisor	Ilene Rosen	ilrosen@rci.rutgers.edu